

# Welcome to The Hague Library

Together we ensure a safe and pleasant library:  
please respect each other and the space.

**House rules** The Hague Library is part of the Council of The Hague. Therefore, the same rules for public spaces apply in the libraries. These house rules can be found at: [www.denhaag.nl/nl/gemeentelijke-organisatie/huisregels-openbare-gebouwen](http://www.denhaag.nl/nl/gemeentelijke-organisatie/huisregels-openbare-gebouwen). In addition, there are the house rules listed below. This way, everyone can feel at home at all locations of The Hague Library.



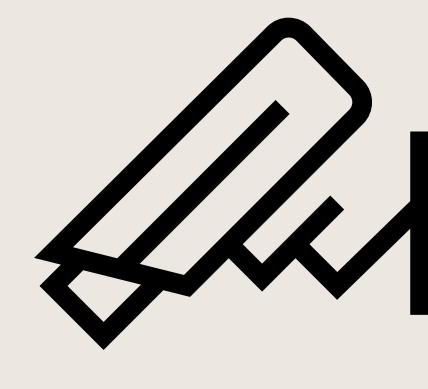
## A pleasant place for everyone

Be considerate of others so that you do not disturb them. The library is a place where many people come and go and where activities take place. This will sometime involve a little noise. We ask for your understanding in this regard.



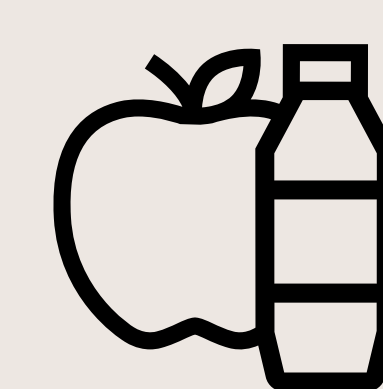
## Always consult with the library before organising your own activities

The library belongs to all of us. You may organise an activity or use the space in another way. Please consult the library first.



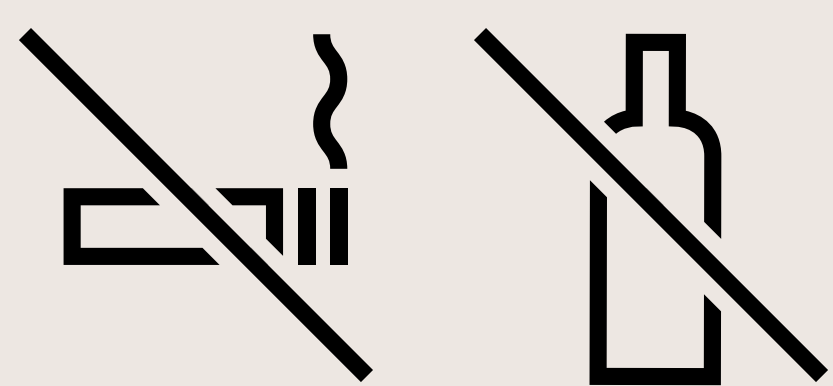
## CCTV surveillance for security

For everyone's safety, the library is equipped with CCTV. Would you like to film or take photographs? Please ask the library first.



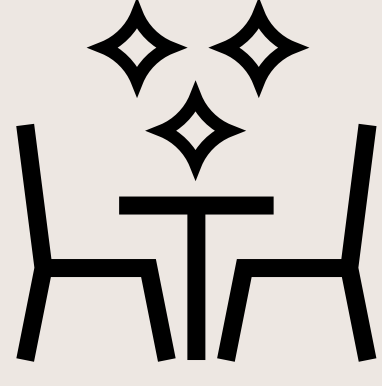
## Eat and drink in moderation

You may eat and drink in many areas of the library. Please note that this is not permitted in some areas, such as near the public computers. Please do not eat strong-smelling or hot takeaway meals.



## No smoking and no intoxication

Smoking and being under the influence of alcohol or drugs are not permitted in the library. You are also not allowed to sleep in the library.



## Leave everything tidy

Leave tables, chairs, toilets and other areas clean and undamaged. Only move furniture if you have permission to do so.



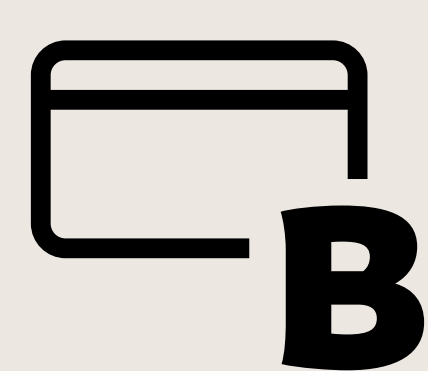
## Only service dogs are welcome

Only service dogs are allowed in the library. Other animals are not allowed in the building.



## No means of transport inside

Bicycles, skateboards, scooters and similar means of transport are not allowed inside. Assistive devices for people with disabilities are permitted.



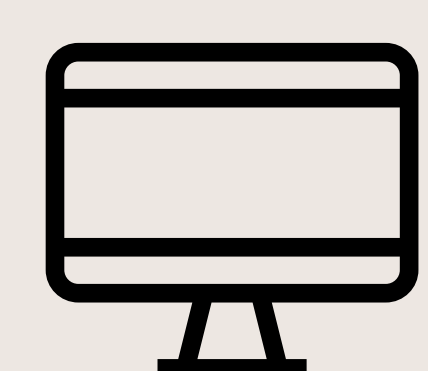
## Borrow materials with a valid card

Only take materials that you have borrowed with your library card.



## Your face must be visible

The library asks that you do not wear clothing that covers your face, such as caps, hoods or balaclavas. Religious headwear is permitted.



## Respectful use of digital resources

You may not view or distribute pornographic, violent or discriminatory content.



## Take good care of your belongings

You are responsible for your own belongings. The library is not liable for loss or theft.

The library staff and security guards ensure that all visitors comply with these house rules, so we ask you to please always follow their instructions. If you do not, you will unfortunately be denied (temporary) access to the library. The library always reports criminal offences to the police. Thank you for your cooperation!

